

## 2-078SL Swinghandle RS 110 SNAP-LINE

for cutout 110x25, for round rods, IP65, tool-less installation



IP 65



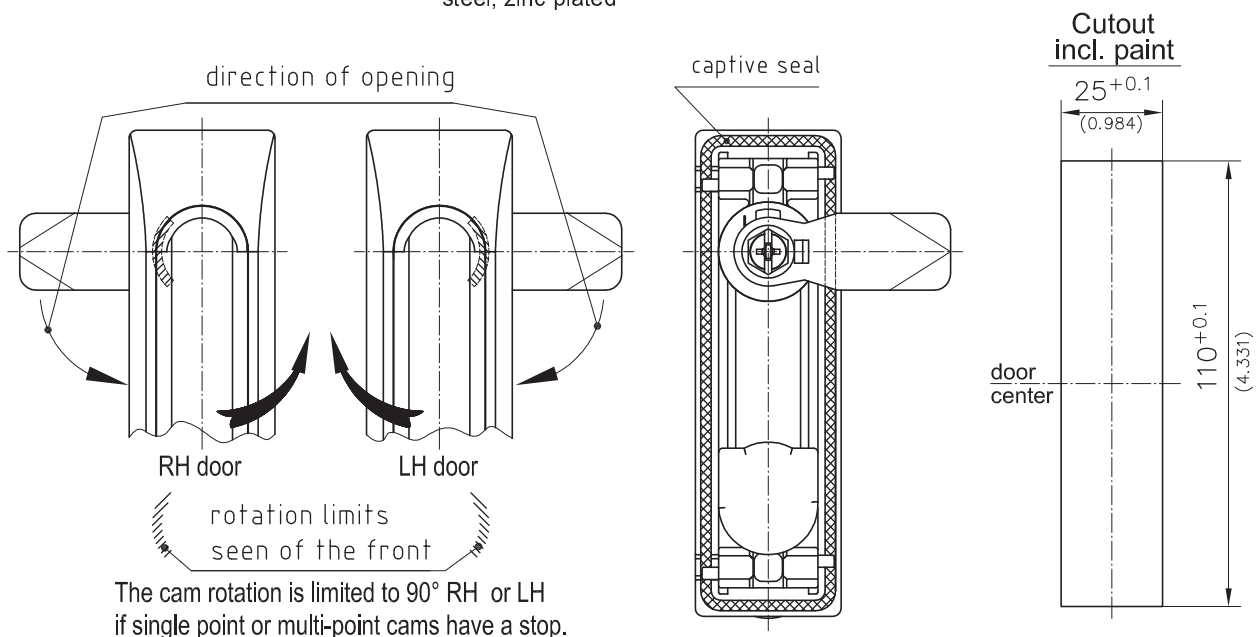
Swinghandle for 3-point cams/round rods.

- Small, flat design.
- Swinghandle countersunk with 90° closing rotation.
- The pre-assembled swinghandle (single or 3-point cam) can simply be snapped into the cutout.
- Limiting stop at 90°.
- RH and LH application is achieved by the rotating bottom.
- Water- and dust-tight according to IP65 DIN EN 60529 by captive sealing.
- Swinghandle can be locked with a round cylinder DIRAK 1333 with stainless steel dust cap.

- Key with synthetic-coated grip.
- **Attention:** Housing length 22mm (0.866inch).
- **Attention:** H-dimension of cam  $\geq 10\text{mm}$  (0.394inch).

### Material:

- **Swinghandle:** zinc die, black
- **Dish:** PA6, black
- **Rotating dish and bottom:** zinc die, untreated
- **Snap-wedges:** sintered steel, zinc plated
- **Spring:** spring steel
- **O-Ring:** NBR
- **Seal:** TPE
- **Serrated screw and cylinder cam:** steel, zinc plated



The cam rotation is limited to 90° RH or LH if single point or multi-point cams have a stop.

For tailored rods on product system 1-180 the length L-in case of symmetrical doors (as drawn) is:

$$L = \frac{\text{clearance} - 12\text{mm}(0.472)}{2(0.079)} - 30\text{mm}(1.181)$$

upper rod

$$L = \frac{\text{clearance} - 12\text{mm}(0.472)}{2(0.079)} + 30\text{mm}(1.181)$$

lower rod

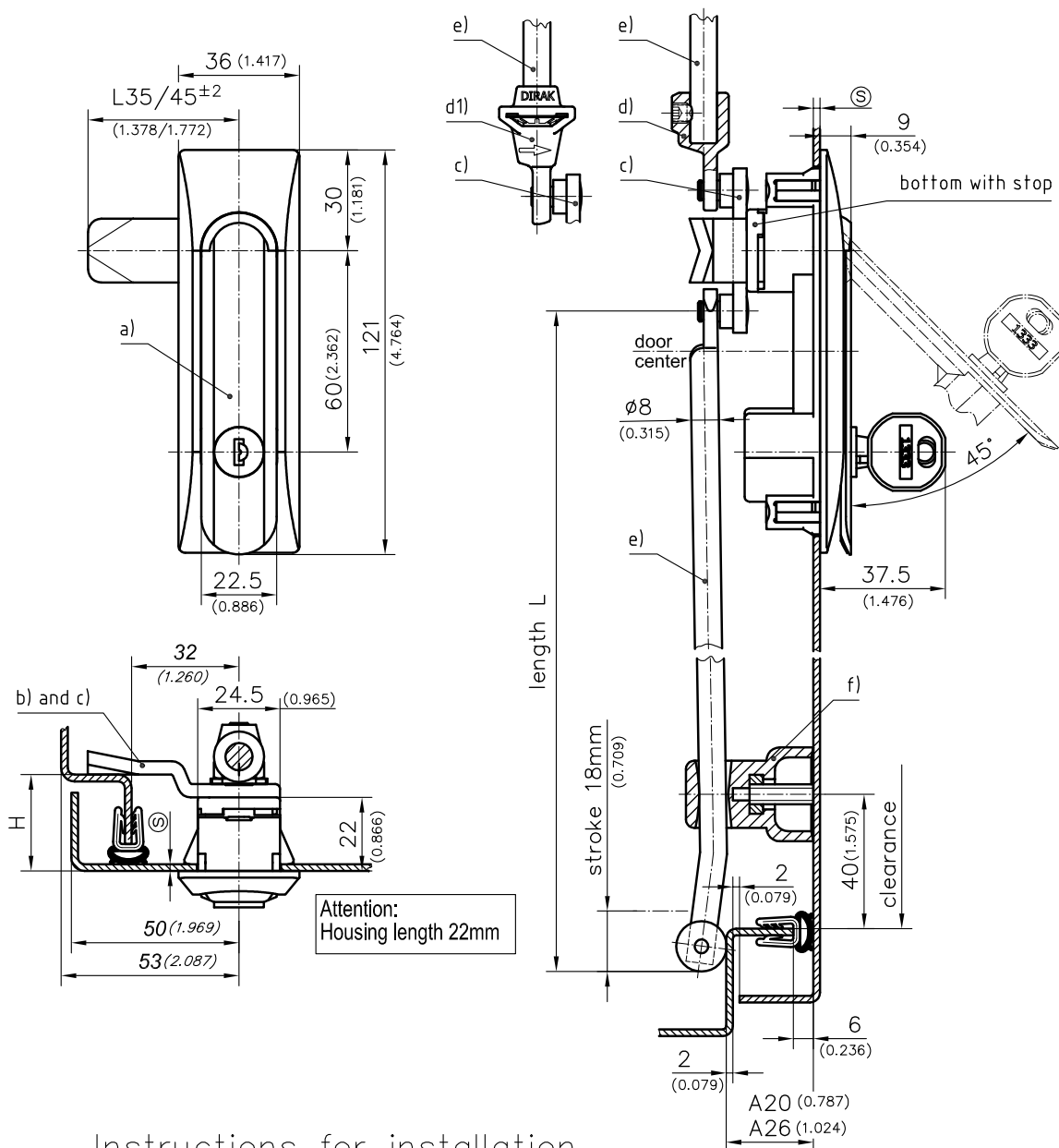
For tailored rods on product system 1-180 the length L-in case of rod control at the door center is:

$$L = \frac{\text{clearance} - 12\text{mm}(0.472)}{2(0.079)}$$

	clamping range <sup>§</sup>	Part No.	see page
a) Swinghandle	1.2 - 1.7	407-9602.00-00015	
	1.7 - 2.2	407-9602.00-00020	
	2.2 - 2.7	407-9602.00-00025	
<b>Other <sup>§</sup> - dimension on request!</b>			
b) Cams			02.45, 02.78, 02.82
c) 3-point or 4-point cam adapter with stop			03.54
d) Adapter for round rods			02.103
d1) Adapter for round rods with clip-in			02.102
e) Round rods			02.97, 02.98
f) Rod guides			02.99, 02.100, 02.101
Tool for uninstallation		292-0306.80-02530	09.09

# 2-078SL Swinghandle RS 110 SNAP-LINE

for cutout 110x25, for round rods, IP65, tool-less installation



## Instructions for installation

